

InteliVision 17Touch

17" RUGGED TOUCH PANEL COMPUTER



Description

New InteliVision 17Touch is Rugged Touch Panel Computer with extended temperature range and UL certification designed for the complete monitoring and control of multiple controllers or complex installation, with large numbers of measured values (CHP). Optimized for ease of use, installation and configuration, the touch screen enables users to create touch buttons linked to another screens, with the option of directly controlling gen-sets or breakers.

InteliVision 17Touch communicates via standard interfaces such as RS232, Ethernet & USB.

The display comes with PC SCADA software enabling the users to configure freely their screen with different types of items like meters, bargraphs, numeric values, control buttons, pictures etc. The software enables users to check the history of multiple controllers and change Setpoints from one place.

InteliVision 17Touch is designed to mount into the panel in power distribution room or on the wall using VESA standard (option).

Benefits

- ▶ UL certification
- ▶ Extended temperature range from -20 up to 60°C
- ▶ Front panel protection IP65 NEMA 4
- ▶ Robust design
- ▶ Big screen with high resolution with LED backlight
- ▶ Two easy access front USB ports
- ▶ Over and undervoltage protection
- ▶ IGS-LOG included for free
- ▶ Multiple controllers monitoring
- ▶ Change the Mode of any connected controller
- ▶ Start/Stop any connected gen-set manually
- ▶ Control/monitor all GCBs/MCBs controlled by ComAp controllers
- ▶ Setpoints change from one place
- ▶ History logs from all controllers
- ▶ Full screen mode/configuration mode
- ▶ Possibility to lock full screen mode by PIN

Order code

Product	Order code
InteliVision 17Touch	IV17T2



ComAp is a member of AMPS (The Association of Manufacturers of Power generating Systems).



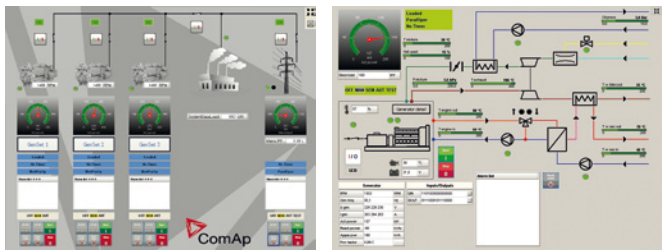
ComAp products meet the highest standards, with every stage of production undertaken in accordance with the ISO certification obtained in 1998.



Typical application

Multiple Gen-sets / Controllers in one location

- ▷ Connection via I-LB+ (RS232, RS485, USB), via InternetBridge-NT or directly using RS-232 or Ethernet (depends on system installation)
- ▷ Status of multiple gen-sets and mains controllers is displayed on one screen
- ▷ Multiple detailed screens available



CHP applications

- ▷ Connection via I-LB+ (RS232, RS485, USB), via InternetBridge-NT or directly using RS-232, Ethernet or USB (depends on type of controller)
- ▷ Status of complete CHP installation displayed on one screen
- ▷ Multiple detailed screens available

Specification

System

- ▷ Processor: Onboard Intel® Celeron® 827E, 1.4 GHz
- ▷ Memory: DDR3 SODIMM 4GB
- ▷ LCD/CRT Controller: Integrated in Intel QM67
- ▷ Ethernet: 10/100/1000Base-TX, 2 x RJ-45
- ▷ I/O Port: 4 x RS-232, 6 x USB2.0, VGA, Line-in/out
- ▷ Storage Disk Drive: 16GB SSD industrial

Mechanical

- ▷ Construction: IP-65/NEMA4 (front)
- ▷ Mounting: Panel/VESA100/Rack/Wall
- ▷ Dimension: 420 mm x 358 mm x 97 mm
- ▷ Cut-Out: 405 mm x 339 mm
- ▷ Gross/Net Weight: 10.5 kg / 8.1 kg

Environmental

- ▷ Operating temp.: -20 up to 60 °C
- ▷ Storage temp.: -20 up to 70 °C
- ▷ Storage humidity: 10–95% at 40 °C (non condensing)
- ▷ Vibration: 3g rms / 5–500 Hz
- ▷ Shock: 15G peak acceleration (11 ms duration)
- ▷ EMC: CE / FCC-A



MANUFACTURER:

ComAp a.s.

Czech Republic

Phone: + 420 246 012 111

Fax: + 420 266 316 647

E-mail: info@comap.cz

Internet: www.comap.cz



Power Supply

- ▷ DC Input: 9–30 V DC, w/3-pin terminal block, over/under-voltage protection, polarity protection

LCD

- ▷ Display type: 17" TFT-LCD
- ▷ Max. Resolution: 1280 x 1024
- ▷ Max. Colors: 16.7M colors
- ▷ Luminance: 350 cd/m³
- ▷ Viewing Angle: 170° (H) / 160° (V)
- ▷ Backlight / MTBF – LED / 50000

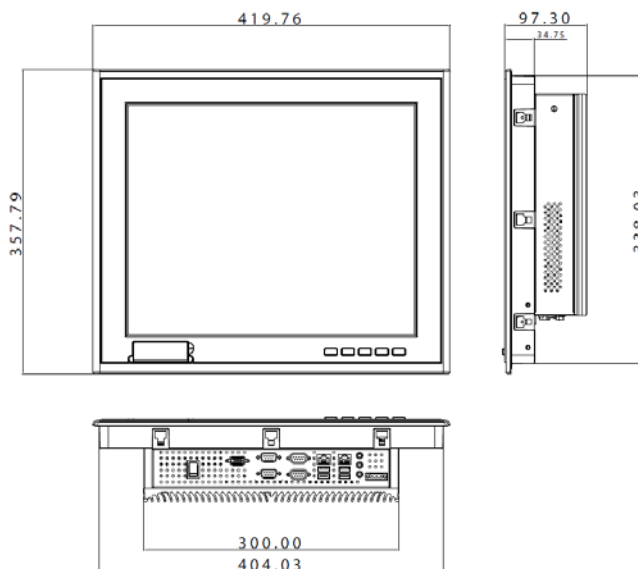
Touchscreen

- ▷ Type: 5-wire resistive
- ▷ Light Transmission: 80%
- ▷ Lifetime: 35 Million activations

Software

- ▷ OS: Windows Embedded Standard 7
- ▷ ComAp: Intelimonitor, IGS-LOG

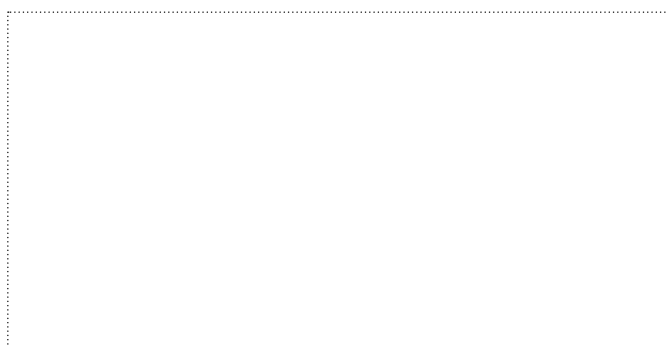
Dimensions



Optional accessories

- ▷ 12V 84W Power Adaptor w/3-pin Terminal Block (order code: 1757908401)
- ▷ Rackmount Kit (order code: 9761317502)
- ▷ Wallmount Kit (order code: ARM-WK075-0)

LOCAL DISTRIBUTOR / PARTNER:



Customer satisfaction is our mission. We continuously develop our people to be the best to succeed in our mission.