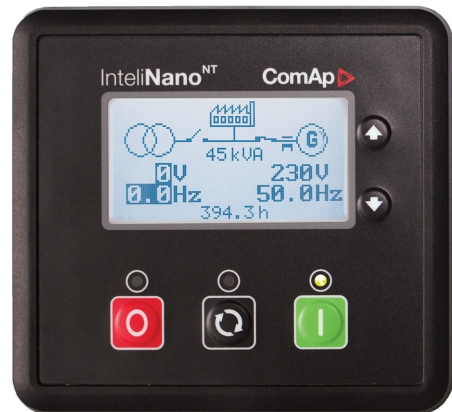


InteliNano Plus



Order code: IN-NT PLUS

Datasheet

Gen-set controller for prime power or stand-by applications

Product description

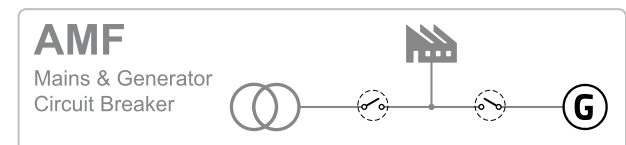
- > Stand-by and prime power application in one model
- > Direct communication with EFI engines

Key features

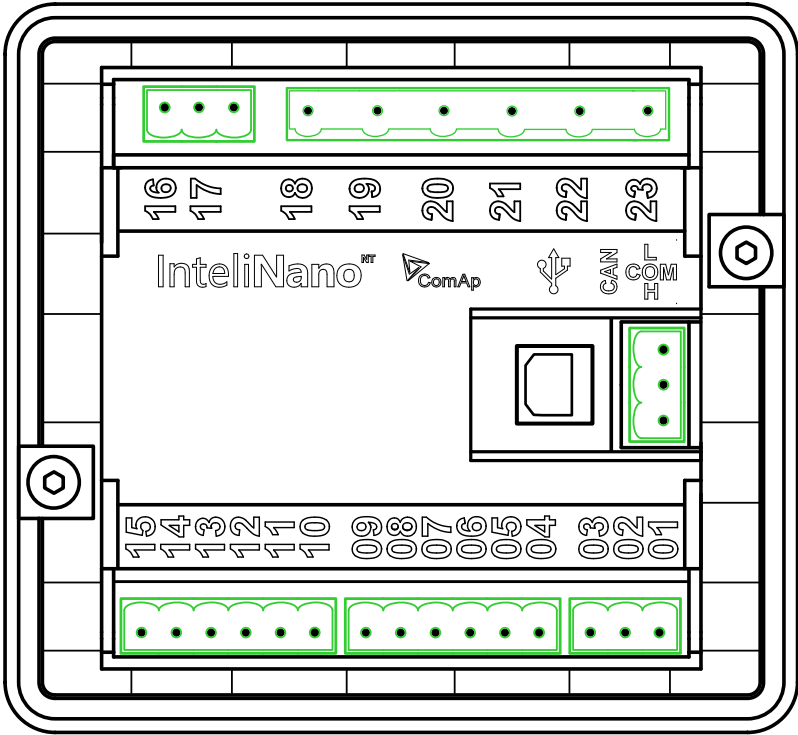
- > 1/3 Phase generator voltage measurement (3/3 phase when used as MRS controller)
- > 1 Phase generator current measurement
- > 3 Phase mains voltage measurement
- > Various generator and engine protections
- > Automatic or manual MCB and GCB control
- > All setpoints and I/O's configurable via front panel
- > Power measure and energy counter
- > Magnetic pick up input
- > Configurable from the front face
- > Free configuration software (NanoEdit) & USB power-up
- > Emergency stop internally connected to Starter and Fuel Solenoid outputs
- > Up 6 inputs / Up 6 outputs
- > ECE engine support over onboard CAN por
- > Battery voltage, Service time and Running hours indicationt
- > Automatic recharge of battery

- > Autodetection of connection type and voltage
- > Zero power consumption mode
- > Symbolic interface
- > Event log of 15 records
- > Light tower support
- > Standard cut-out dimension 96x96
- > Outside dimension 110x100
- > IP 65 (when optional gasket is used)

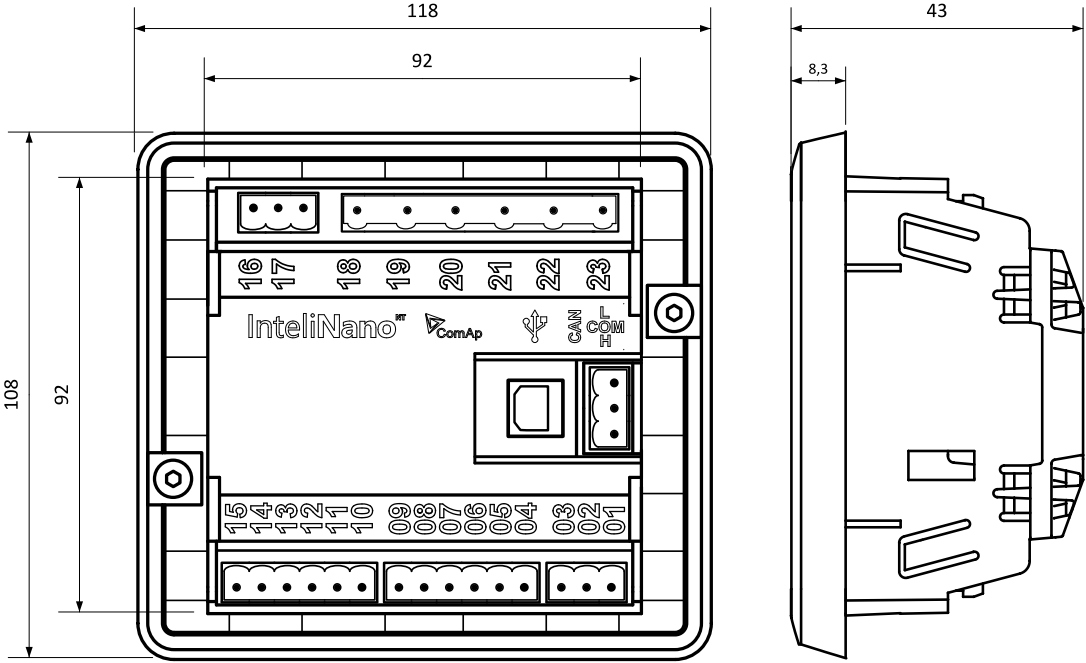
Application overview



Dimensions, terminals and mounting



Note: All dimensions are in mm.



Note: The controller is to be mounted into panel doors as a standalone unit using provided fixing clips. The requested cut-out size is 94 × 94 mm. Use the screw holders delivered with the controller to fix the controller into the door.

Technical data

Power supply

Power supply range	6-36 V DC
Power supply drop-out immunity	100 ms
Power consumption	35 – 295 mA
Zero Power Mode consumption	52 – 344 μ A

Dimensions

Enclosure	118 × 108 × 40 mm
Cutout	96 × 96 mm

Operating conditions

Operating temperature	-20 °C to +70 °C
Operating humidity	95 % w/o condensation (IEC/EN 60068-2-30)
Protection degree (front panel)	IP65 with GASKET 4×405 only IP50 without gasket
Storage temperature	-30 °C to +80 °C

Binary inputs (up to 6)

Input resistance	1.5 k Ω
Closed contact voltage	<2 V
Open contact voltage	>3.5 V

Binary outputs (up to 6)

Low current outputs (4)	500 mA
High current output (2)	6 A (long term) / 10 A (short term)
Total output current	10 A (long term) / 16 A (short term)

Analog inputs (up to 3)

Number of analog inputs	up to 3
Galvanic insulation	Not insulated
Electrical range	0–2500 k Ω
Resolution	0.1 Ω
Precision	2 % \pm 3 Ω

Charging alternator preexcitation circuit

Excitation current	100 mA
Charging fail threshold	80 %

Generator/Mains measurements

Measurement input	1ph gen. voltage, 1ph gen. current, 3ph mains voltage
Measurement type	True RMS
Voltage range	480 V Ph-Ph (277 V Ph-N)
Max. measured voltage	340 V Ph-N
Voltage accuracy	1 %
Frequency range	40-70 Hz
Frequency accuracy	1 %
Current range	0-5 A
Current accuracy	2% True RMS

Functions and protections


The described product fully supports the following functions and protections as defined by ANSI (American National Standards Institute):

Description	ANSI code	Description	ANSI code
Overvoltage	59	Under frequency	81L
Undervoltage	27	Over current**	50
Voltage asymmetry and Phase rotation*	47	Temperature	49T
Over frequency	81H	Gas (fuel) level	71

*Phase rotation only

**Short circuit only

Certificates and standards

<ul style="list-style-type: none">> EN 61000-6-2EN> 61000-6-4> EN 60068-2-1 (-20 °C/16 h for std version)> EN 60068-2-2 (70 °C/16 h)> EN 60068-2-6 (2–25 Hz / ±1.6 mm; 25–100 Hz / 4.0 g)> EN 60068-2-27 (A=500 m/s²; T=6 ms)> EN 60068-2-30> EN 60529 (front panel IP65, back side IP20)	
---	---



E-mail: info@comap-control.com
Web: www.comap-control.com

ComAp 
The heart of smart control